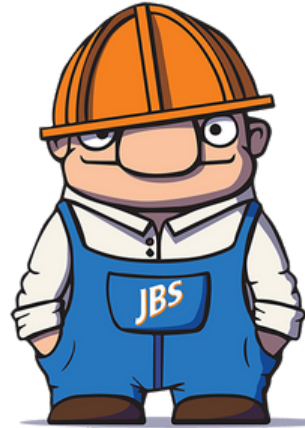


JOHNS CLUB

YOUR TRADE ADVANTAGE



JOHNS CLUB 2026

INSIDE:

**A Warm Welcome from
Big River Group**

JBS Footy Tipping Comp is Back!

**Hume Doors & Timber - New
Products**

Industry News

Manufacturer Increases

Get Social with JBS

Welcome to 2026 and another year of Johns Club.

As many of you may know, Johns Building Supplies joined the Big River Group late last year. While this brings additional support behind the scenes, it's very much business as usual for our customers – the same team, the same service and the same commitment to looking after trade.

Looking ahead to 2026, we're focused on continuing to support you with reliable supply, practical product ranges and service you can count on. We appreciate your ongoing support and look forward to working with you throughout the year.



A WARM WELCOME FROM BIG RIVER GROUP

With the recent change in ownership of Johns Building Supplies by Big River Group, you will begin to see our dual-branded name and team across our communications and services. Rest assured, the high level of service and support you have come to expect will remain unchanged.

Our priority is to ensure this change feels smooth and familiar for you. If you have any questions or require assistance at any stage, our team is always available and ready to help.

Thank you for your continued trust. We look forward to strengthening our relationship and supporting you throughout this next chapter.

Warm Regards,
Helen Awali
Big River Group
Executive General Manager - Construction



JOHNS CLUB FOOTY TIPPING COMPETITION 2026

We're back for another season of footy madness in 2026! The Johns Club Footy Tipping Competition is here again, ready to take you on a rollercoaster ride of thrilling wins, shock upsets, and the occasional tipping disaster. Think you've got what it takes to outsmart the pack? Join the fun, put your footy knowledge (or lucky guesses) to the test, and let's see who comes out on top!

ALL YOUR FAVOURITES ARE BACK THIS YEAR!

- WEEKLY RECAP** Winners and grinders each week and a recap of the round and leaderboard updates.
- SPONSORED ROUND PRIZES** We've got some of the biggest rounds sponsored by JBS suppliers, and your chance to win great prizes in each of those rounds!
- GRAND PRIZE GLORY OF \$7,500 CASH!** Take home the glory/bragging rights and the major cash prize by finishing 1st with most tips and margin at the end of the regular season. Prizes for second and third awarded also.

HOW TO JOIN THE COMP

Join the Johns Club Footy Tipping Competition by the quick 5 steps below -

- 1) Go to <https://www.iTipFooty.com.au>
- 2) Click the '**REGISTER**' button if you don't already have an account with iTipFooty.com.au
- 3) Once you have successfully registered, login and click the **JOIN COMP** button.
- 4) Enter Comp #: **110347** and Comp Password: **JBS2026#**
- 5) Click join comp.....DONE!

Once you are registered you can start tipping! You can tip in advance or before each round. Full Terms and condition for the competition can be found [HERE](#).

Feel free to join in the fun and banter on the iTipFooty app and the JBS social channels.

LET THE TIPPING BEGIN!

ITIPFOOTY APP DOWNLOAD

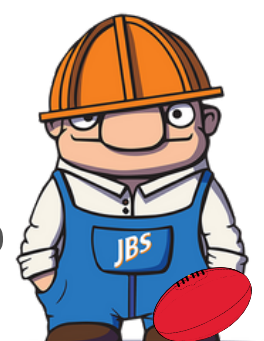
Download the iTip Footy app and login to get started!



AFL 2026

SEASON

JOHNS CLUB
YOUR TRADE ADVANTAGE



FEBRUARY 2026

NARROW LINES GLASS

NEW PRODUCTS AT JBS

Narrow Lines is all
about refined detail

Perfect balance of privacy
and natural light

Create visual interest with
soft diffused lighting

Sophisticated & elegant
separation between rooms



FEBRUARY 2026

GAL SEALED

EVOLUTION STEEL CAVITY UNIT

PERSONALISED STEEL CAVITY

Fully customisable Cavity Unit, allowing you to design your cavity to suit your needs

PREMIUM FEEL

Integrated Soft Closer brings door to a gentle close with no slamming

Enjoy effortless living. The One Touch Release System enables the door to slide seamlessly into the cavity, maximising the opening, while still enabling easy access to the door for closing



GAL SEALED

REDISET REVEAL

- Clean finish with no architraves
- Feels perfectly integrated into your wall

RECESSED CLOSING JAMB



CUSTOMISE TO SUIT YOUR APPLICATION



Complete System

A complete wall system with options to make it your own. Features include:

- High quality track & fittings
- One Touch door release
- Anti-slam soft-closer



Reinforced construction

Extra strength perfect for tiling applications



Compatible with standard and oversized doors



Smooth Track System

Smooth rolling track system with easy access to remove the door at anytime



Impressive large door openings

Get the best from your living areas by creating the ideal room divider. Supports up to 120kg doors



HOUSING INDUSTRY TO CALL FOR \$12B CUT IN RED TAPE COSTS

The building industry will demand the Albanese government slash 25 per cent of an estimated annual \$47.5 billion in red tape stifling housing construction, in a push to make the sector's productivity a key focus of the 2026-27 federal budget.

The push comes as a new report on the Australian economy by the Organisation for Economic Co-operation and Development warned that productivity growth in construction had not increased for a "remarkably long period" and attributed this to regulatory burden.

"Regulation in construction, even beyond planning, has increased greatly over several decades, with a steady increase in the number of approvals needed," said the international forum.

The role of regulatory burden in restricting housing construction productivity and worsening housing affordability was a focus of the government's economic reform roundtable last year.

A separate report from the Productivity Commission in December on economic resilience estimated the cost of red tape constricting the housing industry at \$47.5 billion.

Master Builders Australia, an industry association which represents the country's biggest builders and residential property developers, said it would advocate for a \$12 billion red tape reduction in its submission to the 2026-27 budget process.

It will argue greater efficiency is critical to helping the Labor government meet its self-described "aspirational" housing targets set out in the National Housing Accord.



"To have any chance of meeting the National Housing Accord target of 1.2 million new homes over five years, the building and construction industry productivity needs to recover to where it was a decade ago," said MBA chief executive Denita Wawn.

Wawn said "targeted budgetary measures to improve housing affordability" were needed to help meet the accord's goal.

Analysis by the Productivity Commission last year estimated that regulation added as much as \$320,000 to the cost of a new house and \$175,000 to the cost of a new unit.

"For houses, we estimate that by far the largest component (50 per cent-80 per cent) of the regulatory cost comes from distortionary costs from restrictive zoning laws," the commission said. "[For units] paperwork costs make up around 33 per cent-36 per cent of the total regulatory cost."

The OECD report criticised the progress on the government's initiatives to improve housing productivity and supply as "partial to date".

It indicated that the New Home Bonus, a \$3 billion program that provides performance-based funding to states and territories that achieve more than their share of the home building target, could be targeted for reform.

"Under the accord, states receive payments for home building in excess of the target, but with construction well behind schedule in the first year (for reasons that go beyond policy settings), they may see little incentive in making greater policy efforts," it said.

The New Home Bonus program is payable only in five years' time, which weakens the incentive for state governments, said Peter Tulip, chief economist at the Centre for Independent Studies.

Given the chance to make a change to the government's budget in the housing space, Tulip stressed the need to reform the New Homes Bonus.

"It's payable after five years in 2029 and because of that it has very weak effects on incentives or financial capability of states and local councils to fund new housing. It's just not working," said Tulip.

"I talk to people in the housing sector often, and you never hear the New Homes Bonus being mentioned, which suggests that it's not working to improve incentives.

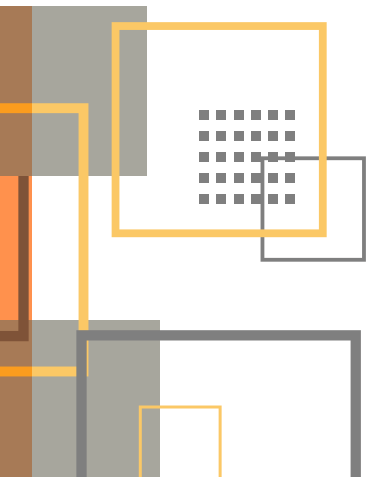
"The private sector is busting to build. In terms of the big issue of housing affordability we need to allow more homes.

"[This is difficult] primarily because of the red tape of local councils, but Canberra can do a lot to make it easier for them, partly with incentives like the New Home Bonus."

Source Author: AFR - Lea Jurkovic

Source Published: 22-01-2026

Source: <https://www.afr.com/policy/economy/housing-industry-to-call-for-12b-cut-in-red-tape-costs-20260121-p5nvqd>



MANUFACTURER INCREASES

1st January 2026

Tilling (Smartframe LVL10, loose rate approx. 5%)

1st February 2026

Haron (various range of Vents, approx. 5%)

1st March 2026

James Hardie (2.9 – 4.9%)

Etex Innova Fibre Cement (3.7 – 5.7%)

Assa Abloy (approx. 4%)

Paslode

CSR Gyprock (3 – 5.5%)

Bradford Insulation (2 – 6%)

ITI (Pioneer Decking 2%)

Siniat Plasterboard (approx. 5.3%)

Vespol (Alcor, Vesfelt 3%)

CSR Cemintel (3 – 5.5%)

Crommelin (Dampco Clear & Black, and other

Waterproofing & Sealing products)

Australian Plastic Profiles (PVC Mouldings, approx. 4.8%)

1st April 2026

Corinthian (approx. 2.9%)

Cockburn Cement

PRODUCT RETURNS

JBS realises that mistakes are part of our industry & when it is ours we rectify in the most timely efficient way we can to minimise any impact on the customer.

Where a customer has made the error we will assist as best we can, but we are bound by some considerations.

- If the product is made to order or a non-stocked item it is up to the discretion of the manufacturer if these goods can be returned. Any costs enforced by the manufacturer will be passed to the customer in full.
- Product being returned must be in a resalable condition (as determined by JBS and/or the manufacturer)
- **Highlighting metal door frames, these must be “clean” (not have any mortar residue) & must also have the spreader bars still attached.**
- There are costs involved in the return of goods & whilst we keep these to a minimum they will be applied at all times.

**Johns Building Supplies thanks you for your continued support and as per normal we endeavour to keep these increases to a minimum. Due to the tight margins that we generally operate under, these increases cannot be absorbed.

FEBRUARY 2026

JOHNS CLUB ENQUIRIES

Builder and Contractor Focus Enquiries

If you would like to be included in our Builder or Contractor Focus we would love to highlight your business!

Please contact:

marketing@jbs1.com.au

Supplier Enquiries

Suppliers wishing to promote a new product in the next JBS Newsletter edition please email :

marketing@jbs1.com.au

GET SOCIAL WITH JBS

Follow us on our social channels to keep up to date more regularly on new products, specials and customer info. Make sure to tag us in your posts so we can share your projects!

Find us on -



REVIEW JBS



At Johns Building Supplies, customer service is paramount to us and we would greatly appreciate it you could take 2 mins to review us on Google or even provide feedback for any products or services you would like to see in the future at JBS.

PROUD SPONSOR OF

