

NOVEMBER  
NEWSLETTER 2023



*"Others talk trade...  
we just do it"*

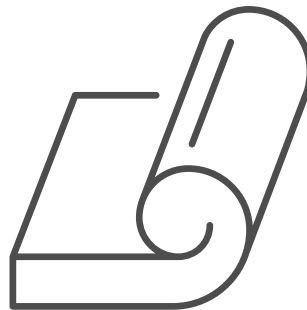
**JOHNS BUILDING SUPPLIES**

johnsbuidingsupplies.com.au 9362 4744

## Featuring this month



**BUILDER  
PROJECTS**



**JBS X AIS  
PARTNERSHIP**



**JBS NEW STOCK  
LINES**

## Also included...

**MANUFACTURER PRICE INCREASES**

**GET SOCIAL WITH JBS**

**REVIEW JBS**

**CHRISTMAS CLOSURE**



# BUILDER PROJECTS



## RONDO

### Alkimos Secondary College Stage 2

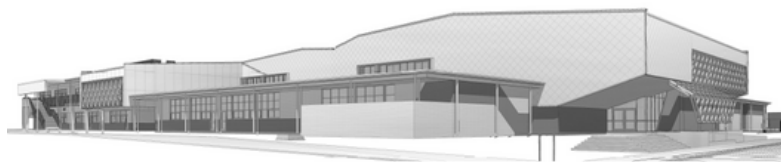
With Construction already underway Stage 2 consists of two Community Classroom Blocks (Mathematics and English Learning Areas), Arts Learning Area, Student Services Building and an Auditorium which can seat up to 125 students.

With the project being awarded to Advanced Ceilings and Walls from Builder Emco, Rondo has worked in partnership with JBS & Advanced Ceilings with provision of Engineered Design Solutions for the external MAXIFRAME stud walls Rondo Reference 9538-22-001 and internal steel stud walls Rondo reference 9538-22-002 as provided to the design team.

These designs have considered loadings specific to the project based on the projects design parameters/requirements as provided by the Projects Design Team.

Rondo steel wall framing systems provide a durable, practical and lightweight structure for internal plasterboard walls to create attractive spaces within buildings, or external wall systems to provide direct support of the exterior cladding and interior linings [Is Your Steel the Real Deal? | Rondo](#).

Rondo is also supplying Rondo Panther SRAP Access Panels in an assortment of sizes to this project [PANTHER® Ceiling Access Panels | Rondo Australia](#)



### MAXIFRAME® EXTERNAL WALL FRAMING SYSTEM

The MAXIframe® External Wall Framing System is a lightweight steel framing system for external wall construction. The system has been expertly engineered to offer builders a more efficient, versatile and cost-effective design option than traditional external wall framing construction methods.

MAXIframe® incorporates standard Rondo 92mm Steel Studs as the main framing and includes two major profiles: MAXIjamb®, a Jamb Stud and MAXItrack®, a Slotted Deflection Head Track as well as complementary cleats to provide a simple, yet solid structure.

#### PRODUCT FEATURES

- LIGHTWEIGHT**  
Efficient, versatile and cost efficient
- FIRE-RATED**  
Available for Fire-rated applications
- SIMPLE INTEGRATION**  
simple, solid structure

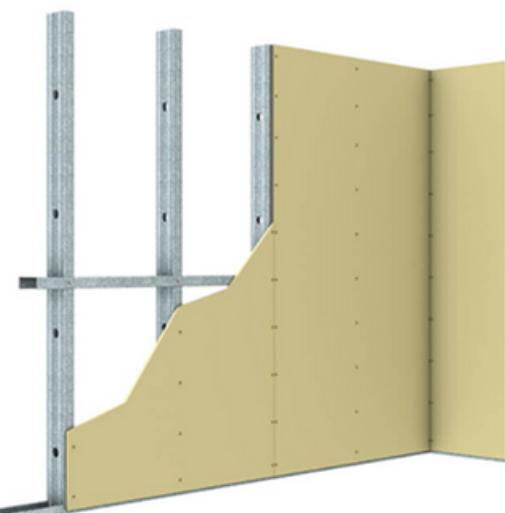


### STEEL STUD & TRACK WALL FRAMING SYSTEM

The Rondo Steel Stud Drywall Framing System provides a durable, practical and lightweight structure for internal plasterboard walls and for specific external walls. The availability of various sizes, complimentary components such as noggling tracks, curved tracks and special cleats ensure Rondo Stud and Track wall systems are available to suit almost all situations.

#### PRODUCT FEATURES

- FIRE-RATED AND ACOUSTIC DESIGN**  
Available for Fire-rated and Acoustic applications
- CURVED WALL SYSTEMS**  
Flexible Track available for curved walls
- SEISMIC DESIGN**  
Available for Seismic applications





## JBS and AIS Insulation Solutions



Johns Building Supplies is excited to announce a new partnership with AIS Insulation Solutions.



INSULATION SOLUTIONS

### GLASSWOOL FOIL ROOFING BLANKET

Lightweight Insulation Solutions

AIS' Glasswool Foil Roofing Blanket is crafted from recycled glass fibres, transformed into lightweight and flexible insulation. This environmentally friendly insulation material offers excellent thermal insulation properties, effectively reducing heat transfer. It is designed to enhance the energy efficiency of residential, commercial, and industrial buildings.

#### Application

AIS Glasswool Foil Roofing Blanket provides thermal and acoustic insulation for commercial roof and residential roof applications. AIS Glasswool Foil Roofing Blanket can achieve condensation control with its medium-duty foil backing (anti-con)

#### Thermal Certification

**AS/NZS 4859.1 Compliant**

#### Fire Safe

**AS/NZS 1530.1 Compliant**

**AS/NZS 1530.3 Compliant**



Acoustic control



Thermal Performance



Fire Resistance



Condensation Control

#### JBS Sales Team

For further product information and sales please contact your Johns Building Supplies representative on **08 9362 4744**, or [sales@jbs1.com.au](mailto:sales@jbs1.com.au)

# NEW JBS STOCK LINES

## HELIBAR 6 SS316 STEEL REINFORCEMENT 1000MM

HeliBar is a helical stainless steel reinforcing bar, with substantial tensile properties, used for strengthening and stabilising masonry in both new build and remedial situations.

### Applications

- Crack stitching
- Lintel repair and creation
- Forming deep masonry beams
- Horizontal structural restraint (when used with BowTie systems)
- Reconnecting separated walls
- Securing parapet walls
- Support existing masonry when creating new openings
- Reinforcing new build masonry
- Seismic upgrades for existing masonry
- Repairing bridges, tunnels and arches

Full product info can be found [HERE](#)



## ZANDA STREAMLINE FURNITURE

Aside from being a classic and timeless design, the Streamline door handle is also great for the elderly and less able (Disabled Compliant). The curve into the door on this lever set prevents the hand from slipping. This handle is a great choice for your next commercial or residential project.

- Backsets are 60mm.
- Rebate kit to suit passage set and privacy sets is 1102A
- Rebate kit to suit entrance sets is 1146
- Dummy sets are fixed and include a rear fixing plate for superior finishing & strength.
- Entrance sets include leverset, 1143 Mortice Lock, 7020 Escutcheon and Cylinder of choice

Also available in [Graphite Nickel](#), [Matt Black](#), [Satin Brass](#) and [Matt White](#) finishes

Full product info can be found [HERE](#)



## MAKITA SPECIALS

Enquire within for one off, amazingly cheap Makita tools (includes Hammer Drills, Drywall Screwdrivers, Routers and more).



## DELFT & GAINSBOROUGH CLEARANCE

Enquire within for a selection of door furniture at super cheap prices to quit.



## SHORTAGE OF SKILLED TRADES PEOPLE REMAINS ACUTE : HIA

“The shortage of skilled trades people remained acute in the September quarter of 2023 despite the return of skilled migration and a slowing in home building activity,” stated HIA Senior Economist Tom Devitt.

The HIA Trades Report released today provides a quarterly review of the availability of skilled trades and any demand pressures on trades operating in the residential building industry.

“The HIA Trades Availability Index deteriorated marginally in the September quarter to -0.65 compared to -0.62 June Quarter 2023,” added Mr Devitt.

“This change, although small, shows that builders found it increasingly difficult to find sufficient skilled trades people to undertake building works.

“The return of overseas workers since the re-opening of international borders in late 2021, has helped ease these constraints over the last 12-18 months, with the Index markedly improved from the -0.92 reading a little over a year earlier.

“Despite this improvement over the past year, the most recent reading highlights how Australia’s home building sector continues to be constrained by some of the most acute shortages of skilled tradespeople on record.

“The RBA’s steep interest rate increases since May 2022 have seen the volume of new work entering the pipeline slowing significantly. This resulted in Australia commencing just 25,390 new houses in the June Quarter 2023, to be one of the weakest quarters of the last decade.

“This fall in the volume of new home starts will ease the acute shortage of skilled trades people, over the next year as the volume of homes under construction continues to slow.

“Australia is expected to have its weakest year in over a decade in terms of the volume of new houses commencing construction in 2024.

“To ensure that Australia has the skilled tradespeople to build the homes needed in the coming years, the industry needs to have continued access to skilled migrants, as well as train and upskill our existing and future workforce,” concluded Mr Devitt.

By trade, the most acute shortages of skilled tradespeople in the September Quarter 2023 remained in bricklaying (Index reading of -1.17), roofing (-0.91), carpentry (-0.88), and ceramic tiling (-0.82).

Across the states and territories, all markets experienced a boom in housing demand during the pandemic, but it was the smaller markets where these booms were most significant. This is why the most acute shortages of skilled tradespeople in the September Quarter 2023 were in Queensland (-0.85 in the capital, -0.94 in the regions), South Australia (-0.75, -0.92) and Western Australia (-0.71, -0.77), compared to New South Wales (-0.62, 0.60) and Victoria (-0.59, -0.57).



# JBS CHRISTMAS CLOSURE



Please Note, Johns Building Supplies will have altered opening and closing times over the Christmas and New Year break.

## **CLOSED FROM**

**Friday 22nd December - 3pm**

## **RE-OPENING**

**Tuesday 2nd January - 6am**

If you have any questions or queries relating to stock, delivery and availability over this period, please contact the JBS Sales Team who can assist you.

# PRICE INCREASE NOTIFICATIONS

## 1st August 2023

Iccons Fasteners

Metroll, C/Bond products, approx. 5.9%

Stramit, C/Bond products, approx. 5.5%

ITI

Dy-Mark

Lysaght

## 1st September 2023

Zanda Architectural Hardware (approx. 4.7%)

Roofextenda

## 1st February 2024

Bradford Insulation, 3 - 8%

Assa Abloy, 5.2%

\*\*Johns Building Supplies thanks you for your continued support and as per normal we endeavour to keep these increases to a minimum. Due to the tight margins that we generally operate under, these increases cannot be absorbed.

# PRODUCT RETURNS

JBS realises that mistakes are part of our industry & when it is ours we rectify in the most timely efficient way we can to minimise any impact on the customer.

Where a customer has made the error we will assist as best we can, but we are bound by some considerations.

- If the product is made to order or a non-stocked item it is up to the discretion of the manufacturer if these goods can be returned. Any costs enforced by the manufacturer will be passed to the customer in full.
- Product being returned must be in a resalable condition (as determined by JBS and/or the manufacturer)
- **Highlighting metal door frames, these must be "clean" (not have any mortar residue) & must also have the spreader bars still attached.**
- There are costs involved in the return of goods & whilst we keep these to a minimum they will be applied at all times.

# NEWSLETTER ENQUIRIES

## Builder and Contractor Focus Enquiries

If you would like to be included in our Builder or Contractor Focus we would love to highlight your business!

Please contact:

[marketing@jbs1.com.au](mailto:marketing@jbs1.com.au)

## Supplier Enquiries

Suppliers wishing to promote a new product in the next JBS Newsletter edition please email :

[marketing@jbs1.com.au](mailto:marketing@jbs1.com.au)

# GET SOCIAL WITH JBS!

Follow us on our social channels to keep up to date more regularly on new products, specials and customer info. Make sure to tag us in your posts so we can share your projects!

Find us on -



# REVIEW US



At Johns Building Supplies, customer service is paramount to us and we would greatly appreciate it you could take 2 mins to review us on Google or even provide feedback for any products or services you would like to see in the future at JBS.



## JBS Sales/Product Enquiries

E: [sales@jbs1.com.au](mailto:sales@jbs1.com.au)

P: (08) 9362 4744